



# LAND COVER CLASSIFICATION OF POLAND PERFORMED EVERY YEAR BASED ON SENTINEL-2

Stanisław Lewiński  
*stlewinski@cbk.waw.pl*

Marek Ruciński, Szymon Sala, Cezary Wojtkowski, Ewa Gromny,  
Małgorzata Jenerowicz-Sanikowska, Michał Krupiński





# S2GLC – Sentinel-2 Global Land Cover

Phase I: 2016 – 2018

Phase II: extension 2018/2019



CBK PAN



IABG (Industrieanlagen Betriebsgesellschaft mbH)



EOXPLORE



University of Jena

Time series  
of Sentinel-2 images

Random Forest  
classification

Training points



*Classification  
is performed  
„tile by tile”*

- LC class,  
- prediction score

Counting for each pixel:  
- No. of occurrences of each class  
- SUM of prediction score of each class

AGGREGATION

POST-PROCESSING

The final classification

### Training

- based on existing LR databases
- random selection of points, separately for each tile and classification

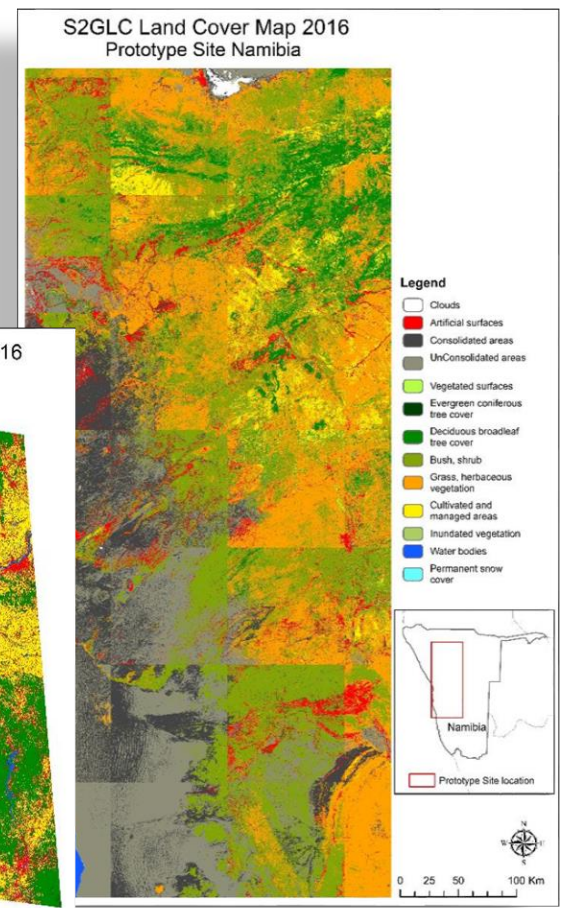
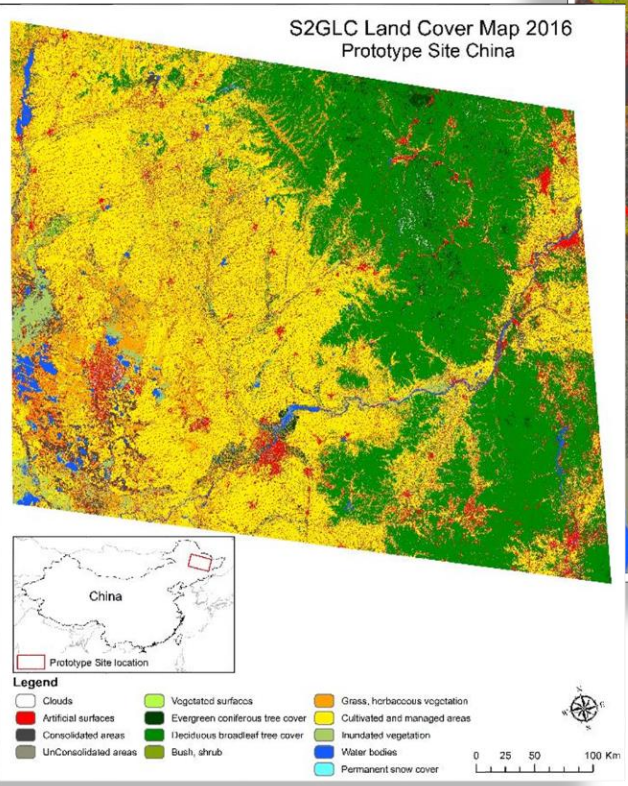
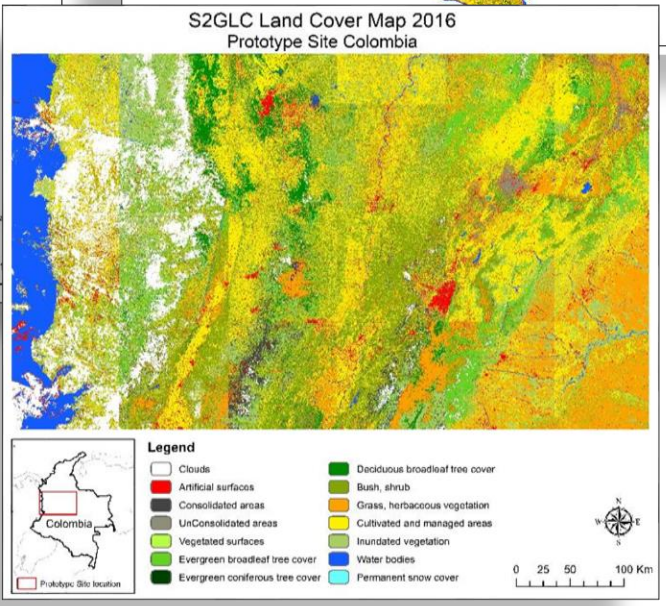
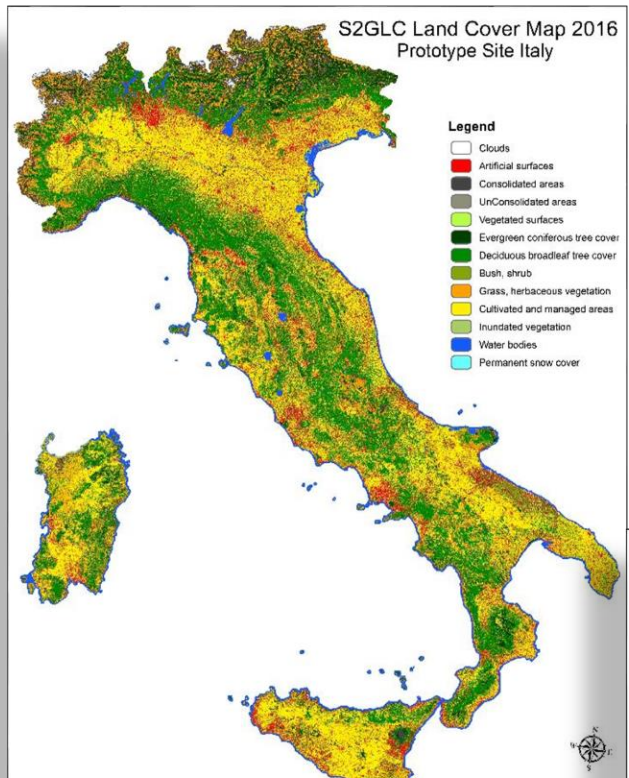
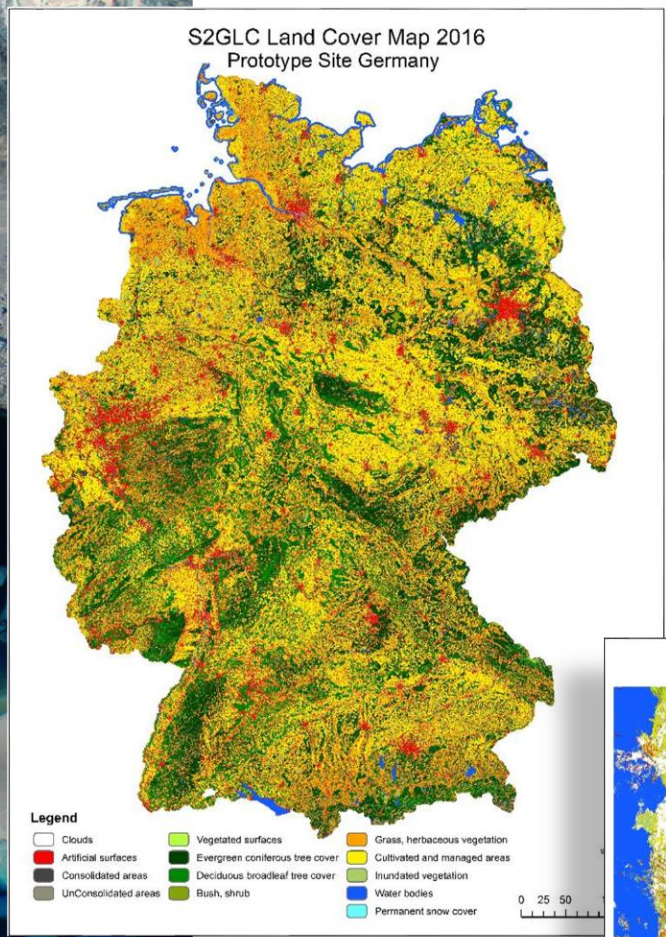
### Classification

- pixel-based classification, Random Forest
- Aggregation of single classifications
- Post-processing

### Automation

- almost complete
- software prepared by CBK PAN

# Phase I: 2016 – 2018





# LC CLASSIFICATION – EUROPE 2017



Phase II: extension 2018/2019

## CLASIFICACION

815 Setinel-2 tiles,  
15 000 images



## VALIDATION

51 926 points  
spread randomly over 55 tiles

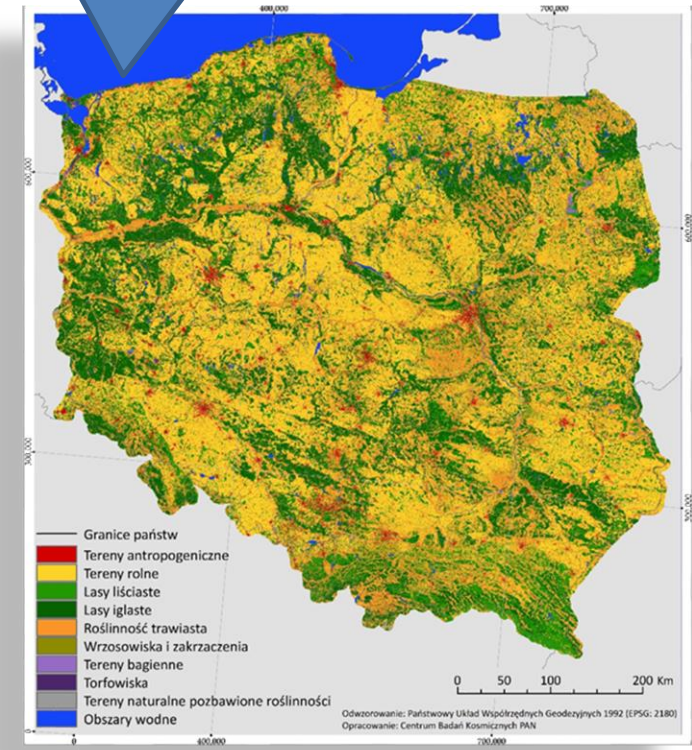
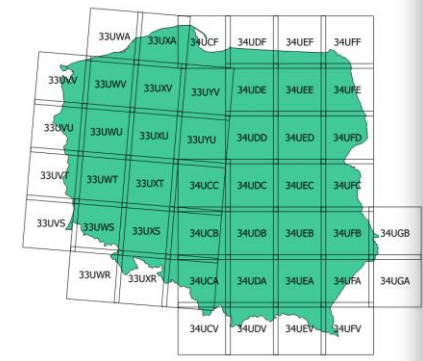
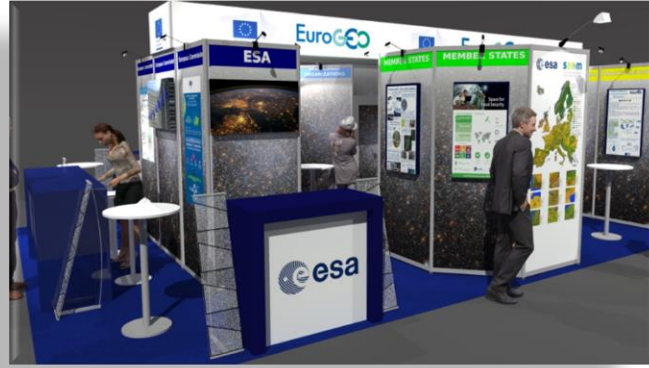
OA:

13 LC classes: **86.1%**

10 LC classes: **89.0%**

combined classes :

- [ vineyards
- [ cultivated and managed areas
- [ moors and Heathland
- [ herbaceous vegetation
- [ marshes
- [ peatbogs



# LAND COVER CLASSIFICATION OF POLAND USING S2GLC APPROACH

2019

2020

2021

2022

2023 in progres



classification is performed every year since 2019,  
a unique set of data illustrating land cover throughout the country is available free of charge  
(hundreds of thousands of downloads).

Year	2019	2020	2021	2022	2023
Validation points	10 597	11 860	13 080	17701	In progres
OverAll accuracy	<b>87.2 %</b>	<b>79.9 %</b>	<b>84.3 %</b>	<b>85.6%</b>	in progres

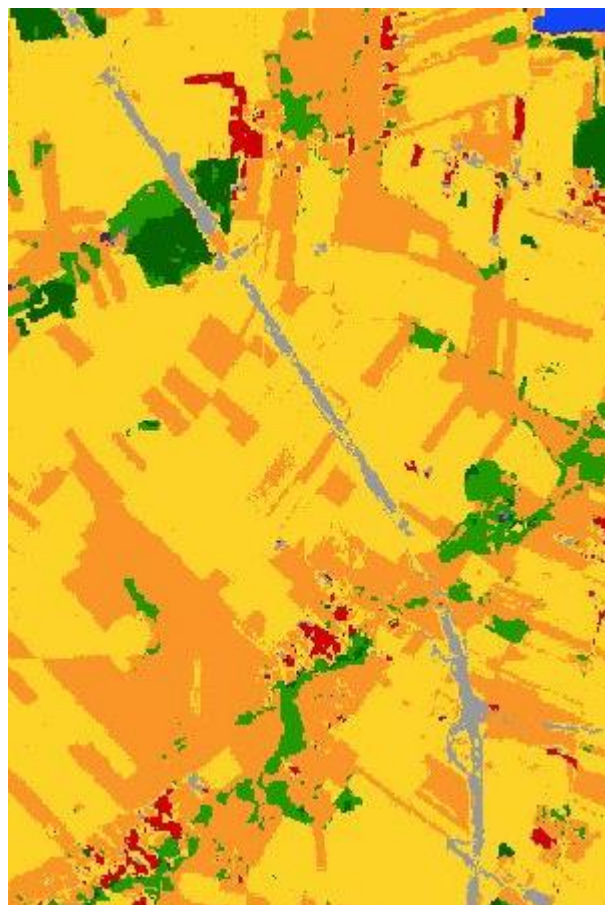
## construction of an expressway

2019

2020

2021

2022



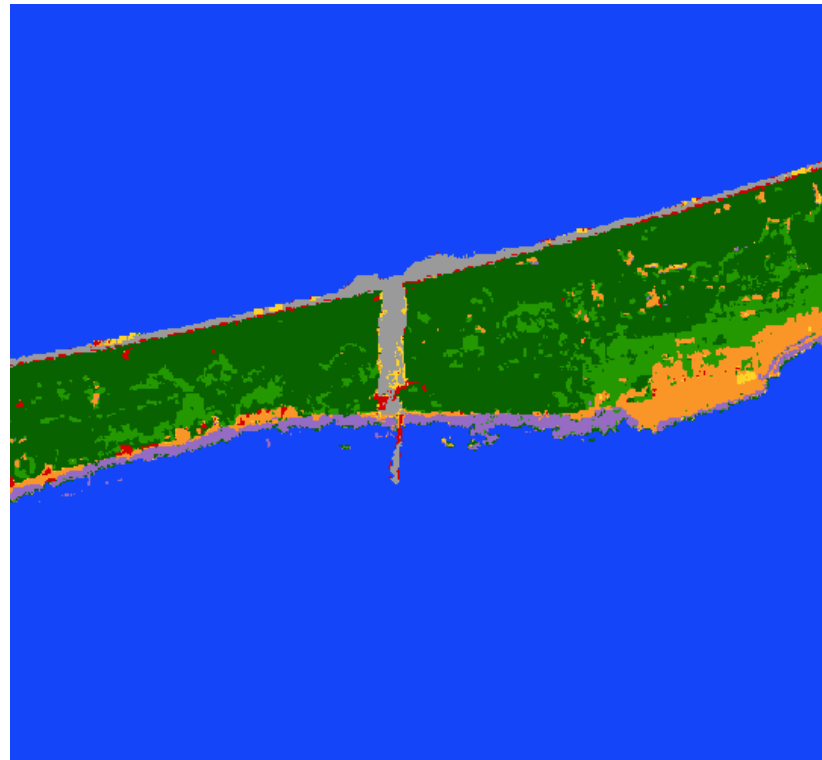
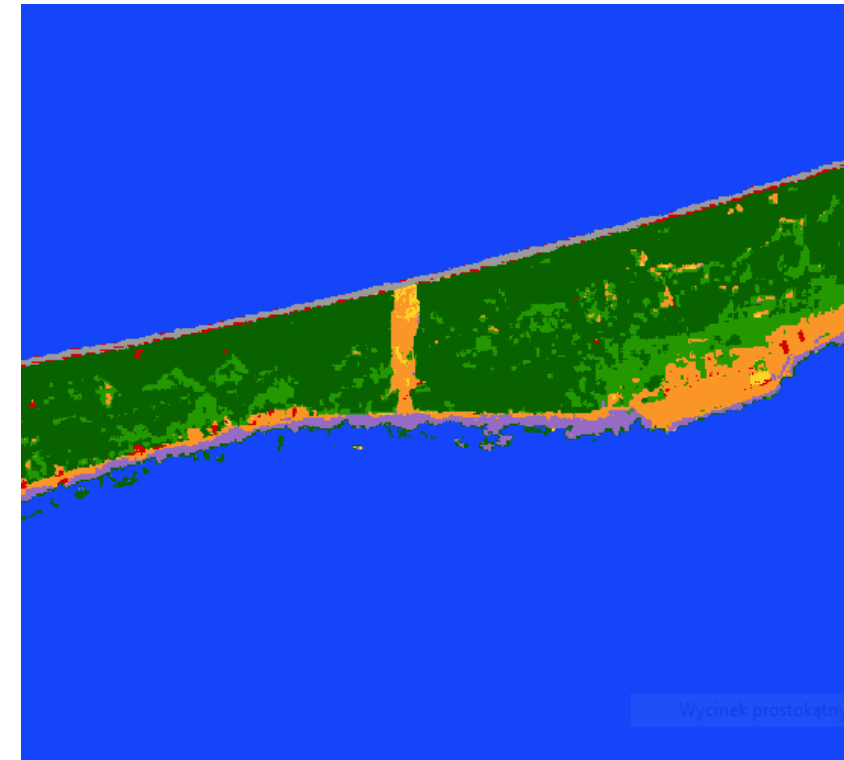


## digging the Vistula spit

2019

2020

2021



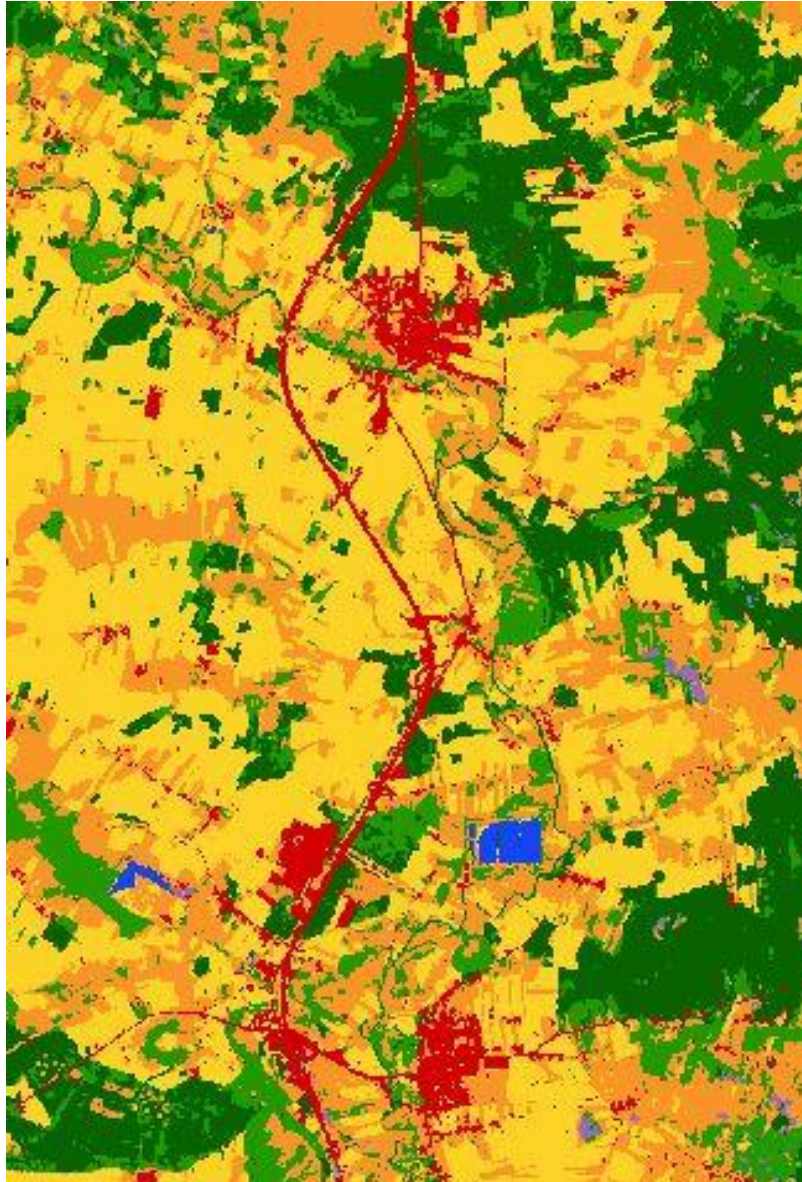
## artificial islands in the Szczecin reservoir

2020

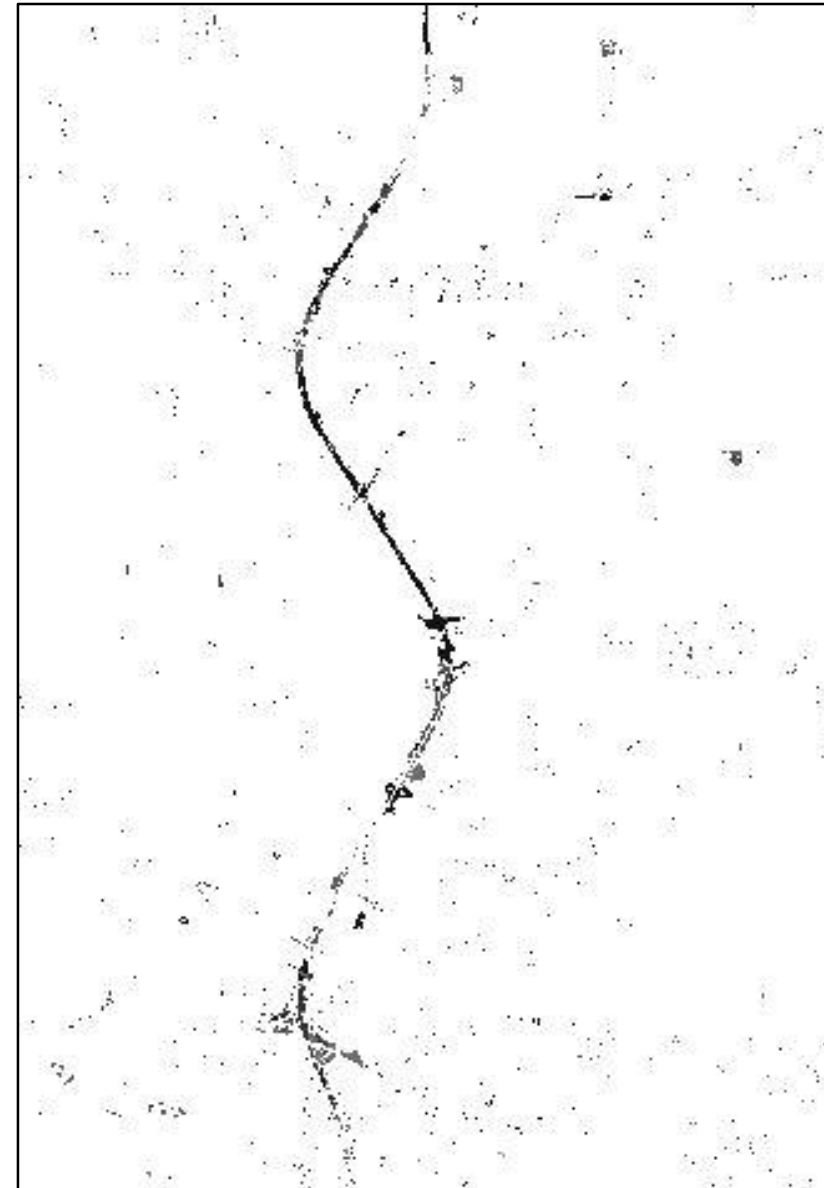
2021



# Change Detection dedicated to S2GLC classification approach



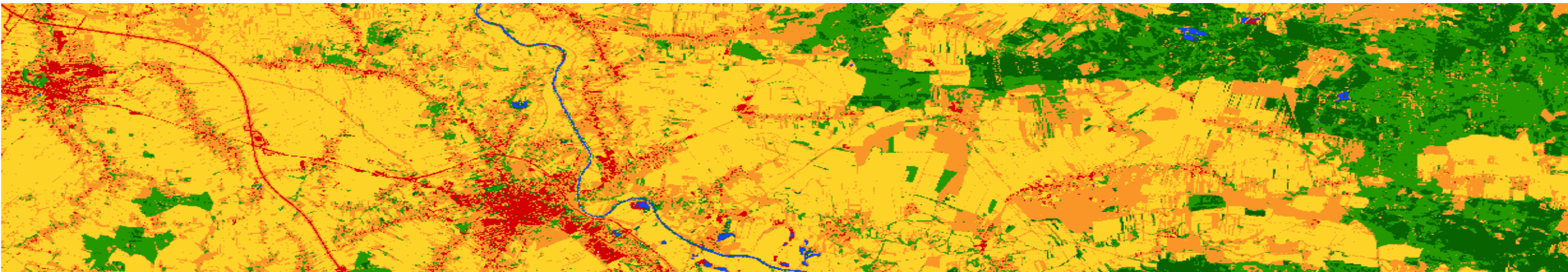
2020



2019 – 2020 CD S2GLC

# CONCLUSION

- The results of the ESA S2GLC project are put to practical use;
- Land Cover classification of Poland is performed every year;
- Change Detection of LC will be implemented in the coming year.





# LAND COVER CLASSIFICATION OF POLAND PERFORMED EVERY YEAR BASED ON SENTINEL-2

**Stanisław Lewiński**  
*stlewinski@cbk.waw.pl*

Marek Ruciński, Ewa Gromny, Cezary Wojtkowski, Szymon Sala,  
Małgorzata Jenerowicz-Sanikowska, Michał Krupiński

