



Delivering on Land Cover Requirements for Policy Monitoring and Compliance

Conrad BIELSKI



EOXPLØRE
to observe, to explore, to protect

BOLZANO 2-4 OCTOBER 2023

eurac
research



Institute of
Atmospheric Pollution
Research
National Research Council of Italy

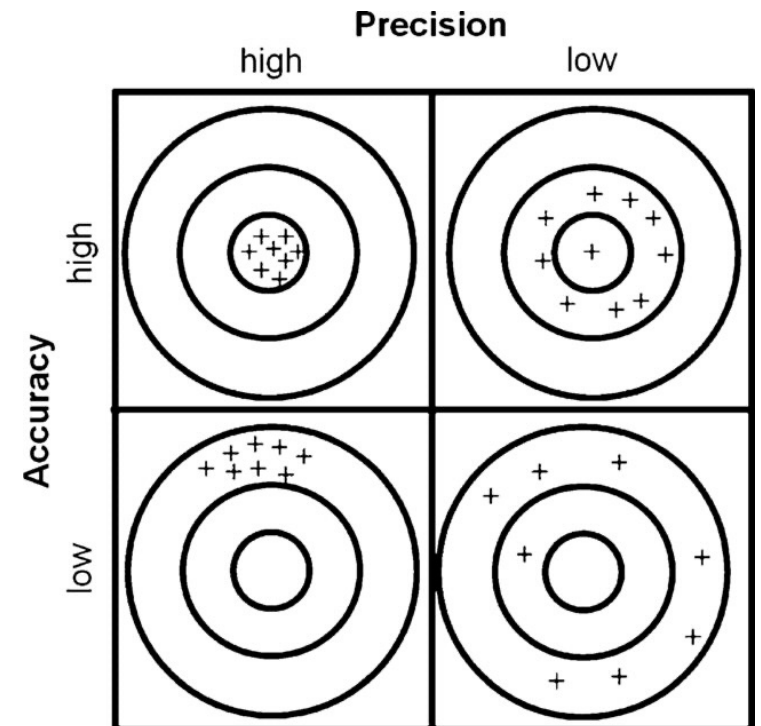


European
Commission



The EU GreenDeal

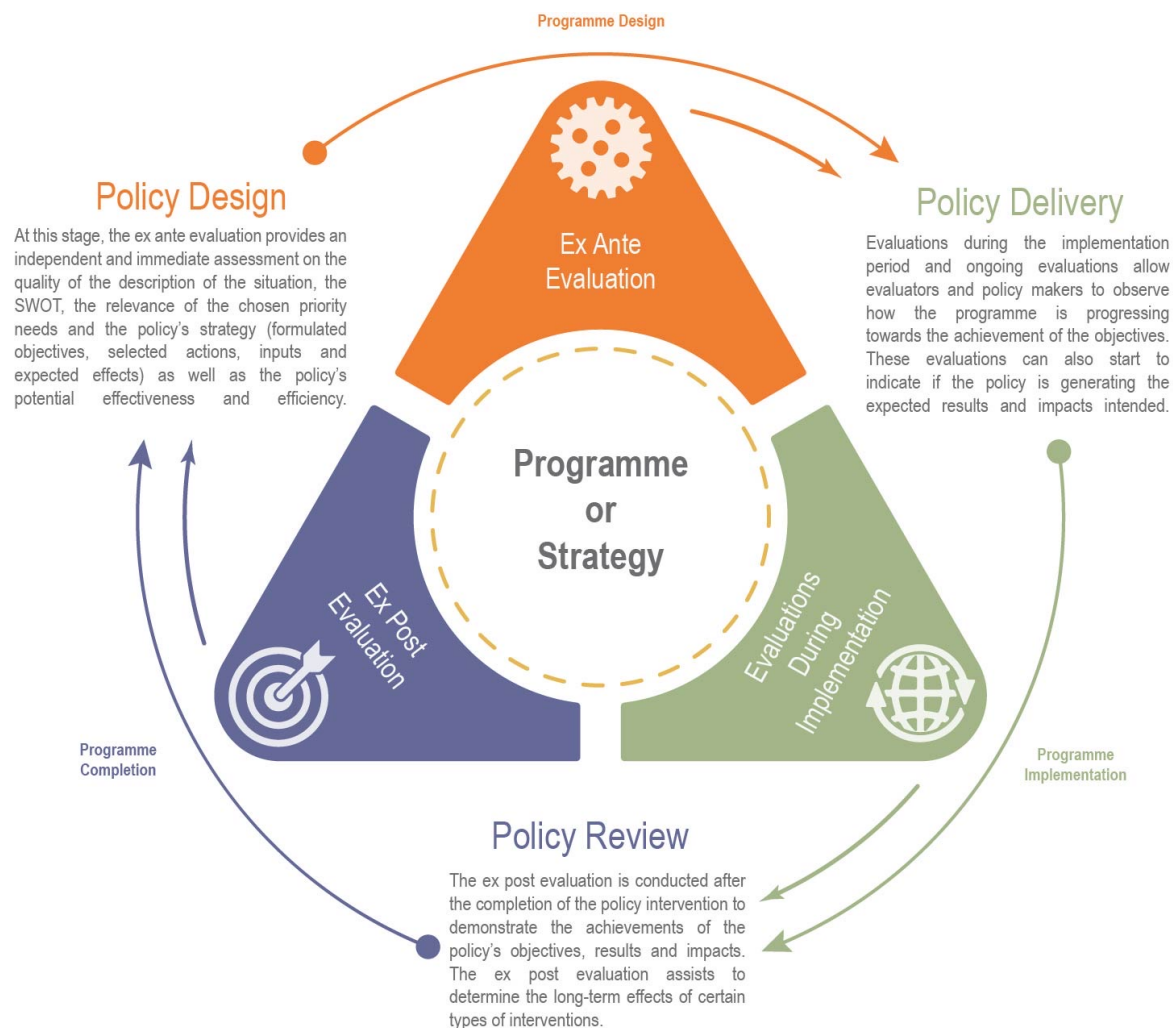
- Circular economy
- Decarbonisation
- Digitalisation
- Preserving and restoring ecosystems and biodiversity
- Setting appropriate targets –





What is policy monitoring?

- Implementation progress (input/activities/outputs)
- Achievement of objectives and results
- Contribute to learning lessons -> to improve future interventions
- Constantly and actively engaged in improving the quality of reporting
- Facilitating the design and monitoring of its interventions.





What is policy compliance?

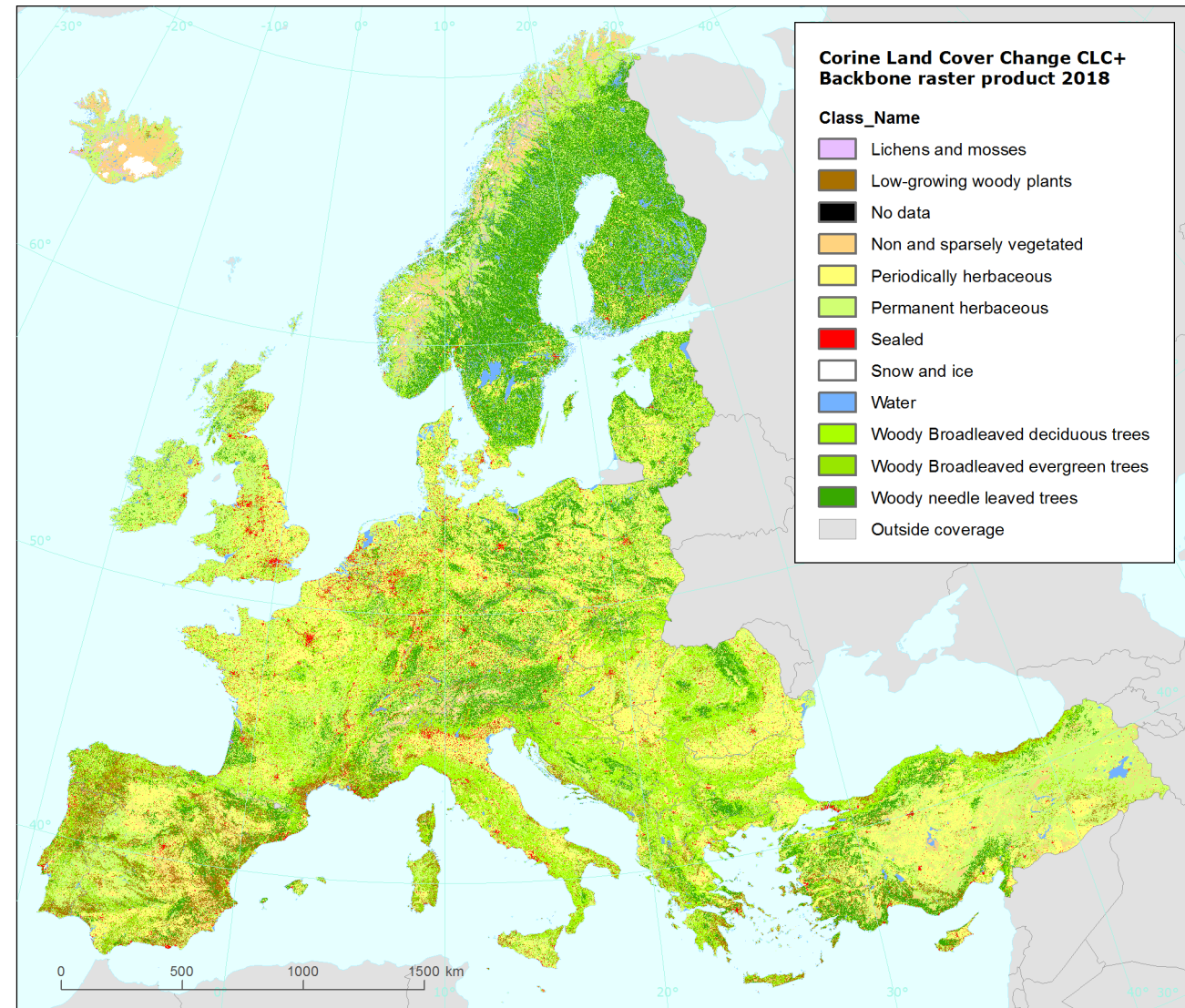
- Can we change behaviour with data and information?
- Inform and support reporting on results and evidence-based decision making
- Taking corrective measures when necessary
- Learn about the functioning of EU interventions and assess their performance against initial expectations.
- Comply with the rules that apply in that country and throughout the EU.
- Empowered to impose monetary sanctions in case of 'non-compliance' due to incomplete or misleading information, or if a reply was not provided to a formal information request.





What is land cover?

- How do you define land cover?
- What aspects of land cover data or information are most important?
- Quality over quantity?
- Definitions...
- Continuity...



Reference data: Administrative boundaries: ©EuroGeographics, © FAO (UN), © TurkStat Source: European Commission – Eurostat/GISCO



EuroGEO and beyond

- If we can do it in Europe, we can do it anywhere!
- Showcase working solutions
- Avoid trying to know everything all the time
- Links to other global initiatives – SDG
- Supporting cross-cutting activities





Delivering on Land Cover Requirements for Policy Monitoring and Compliance

Conrad BIELSKI



EOXPLORE
to observe, to explore, to protect

BOLZANO 2-4 OCTOBER 2023

eurac
research



Institute of
Atmospheric Pollution
Research
National Research Council of Italy



European
Commission



Scaling European Land Cover / Land Intelligence Standards to the World

Stanisław Lewiński & Conrad Bielski

The EuroGEO logo, featuring the word "Euro" in blue and "GEO" in green, with a stylized "G" and "O" that are interconnected.

BOLZANO 2-4 OCTOBER 2023



Land Cover / Land Intelligence Action Group

- The Copernicus Data Space Ecosystem (CDSE)
- Needs/requirements for improving LC/LI information for new technologies and applications including ML/DL/AI
- Recommendations for the evaluation/validation of LC/LI products based on ML/DL/AI solutions
- Access to new/existing reference data. Potential for development of validation service based on open thematic reference data
- Quality assessment and an EU data label
- Underpinning role of in-situ measurements and access
- Working together with other Action Groups